

A man with a beard and glasses, wearing a light blue shirt, is sitting at a desk in a bright office. He is looking at a laptop screen with his hand on his chin, appearing thoughtful. On the desk, there is a red mug and a pen holder with several pens. The background shows a large window with a view of a city.

COMMERCIAL LIGHTING SOLUTION

*Light up a positive work environment*



## An office environment that **you always cherished for**

World-class workplace inspires your team to deliver an equally world-class performance. With a thoughtfully planned design, lights can make spaces more conducive for everyone to read, think and work on their laptops without easily getting tired. Good lighting can also help a person relax and energize after long meetings, so time spent in the office can be optimally productive. With the investments you are making, your office spaces should be as attractive, responsive and human-centric as possible. Our new lighting technologies are designed to adapt to your ever-changing needs and user habits, allowing the same space to be multi-functional yet elegant at the same time. This way, you get higher value and a better return on your investment. Most important of all, improving your workplace improves the well-being of your best assets: your people.



## INDEX

01 - 02 Fabricated to Exceed

03 - 04 Lighting Concepts

05 - 06 Typical Office Plan

07 - 10 Reception and Indoor Public Area

11 - 14 Open Office Plan

15 - 16 Corridor and Circulation Area

17 - 20 Cubicles and Executive Area

21 - 22 Meeting Room

23 - 24 Restrooms

25 - 26 Cafeteria

27 - 28 Exterior Facade & Lobbies

29 - 30 Car park

31 - 32 Appreciation Letters (Comm.)

33 - 42 Retail

43 - 44 Appreciation Letters (Retail)



## Fabricated to Exceed

From the reception to the boardroom, our professional range of LED lighting solutions are perfect to impress and inspire, besides offering the best lighting that falls at all the right places.

Combine the latest portfolio from the Bajaj LED lighting range with our .nxt lighting controls, and you can count on the benefits that will outperform your expectations.

1. A dramatic decrease in your energy use and utility bills
2. A better work environment that enhances your team's well-being and boosts productivity
3. A decrease in your company's carbon footprint, addressing sustainability for the long run
4. Revenue boost with higher occupancy rates and rental income
5. An enhanced brand image and company reputation as a result of an effective lighting upgrade

At Bajaj Lighting, we work with you to provide a workplace that puts tenants and building owners under the best light.



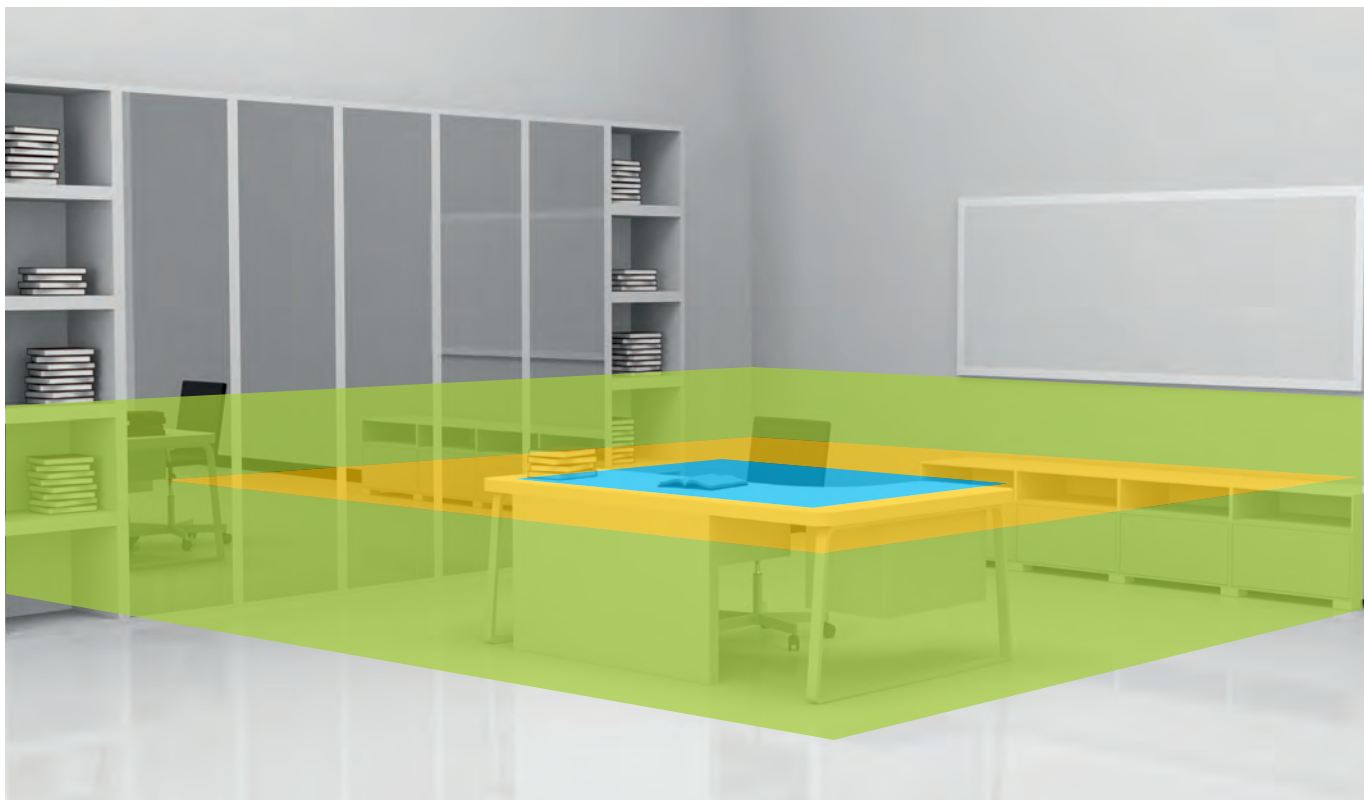
*"The most important thing executives can do is send a very clear message to their employees that they care about each person's overall well being"*

- Tom Rath Gallup

## THREE LIGHTING CONCEPTS FOR OFFICES

The modern working world with its mobile workforce, recreation zones and flat screen monitors permits and requires new lighting solutions. Designing a lighting system for optimum functionality and aesthetic appeal calls for a knowledge of the different types of modern lighting available and the kind of impact they have.

For office lighting applications, there are three lighting concepts. These concepts can be realized by lighting types B1, B2, B3, B4, B5 and B6. The table on page 4 shows the types of lighting recommended - B1 to B6 -for each lighting concept.



- **Room-Related Lighting**

Uniform lighting throughout the room creating roughly the same visual conditions at all points. This is recommended where the arrangement of task areas is unknown during the planning phase or where the arrangement of task areas needs to be flexible.

- **Task Area Lighting**

Different lighting for task areas and the space around them. This is recommended where a room contains several task areas which are used to address different visual tasks and thus have different lighting requirements. It is also an option where visual divisions are needed to identify different workplace clusters.

- **Work Surface Lighting**

Workplace luminaires can be used to supplement "basic lighting" - which can be either room-related or task area lighting - to achieve a level of lighting finely tuned to the requirements of the visual task or to personal needs.

**DIRECT LIGHTING** (Ceiling Luminaires)



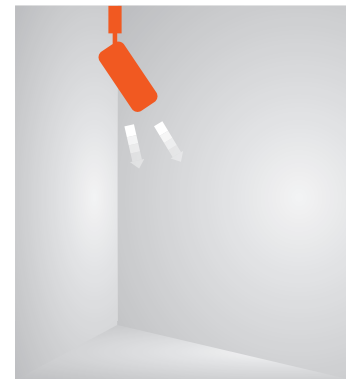
**B1** Room Related Lighting & Task Lighting

**DIRECT/INDIRECT LIGHTING** (Pendant Luminaires)



**B2** Room Related Lighting & Task Lighting

**SPOT** For Illuminating vertical surfaces



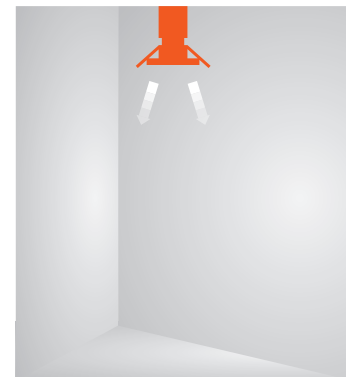
**B5** Room Related Lighting & Task Related Lighting

**DIRECT/INDIRECT CEILING LIGHTING** (Ceiling Luminaires)



**B3** Room Related Lighting

**DOWNLIGHTS** For Illuminating Communication zones



**B6** Room Related Lighting & Task Related Lighting

**TASK LIGHTING WITH SPECIAL OPTICAL CONTROL** (Pendant Luminaires)



**B4** Room Related Lighting, Task Related Lighting & work surface Lighting



1 Reception and Indoor Public Area



6 Restrooms



9 Car Park



2 Open Plan Office



7 Cafeteria and Pantry



3 Corridors and Circulation Areas



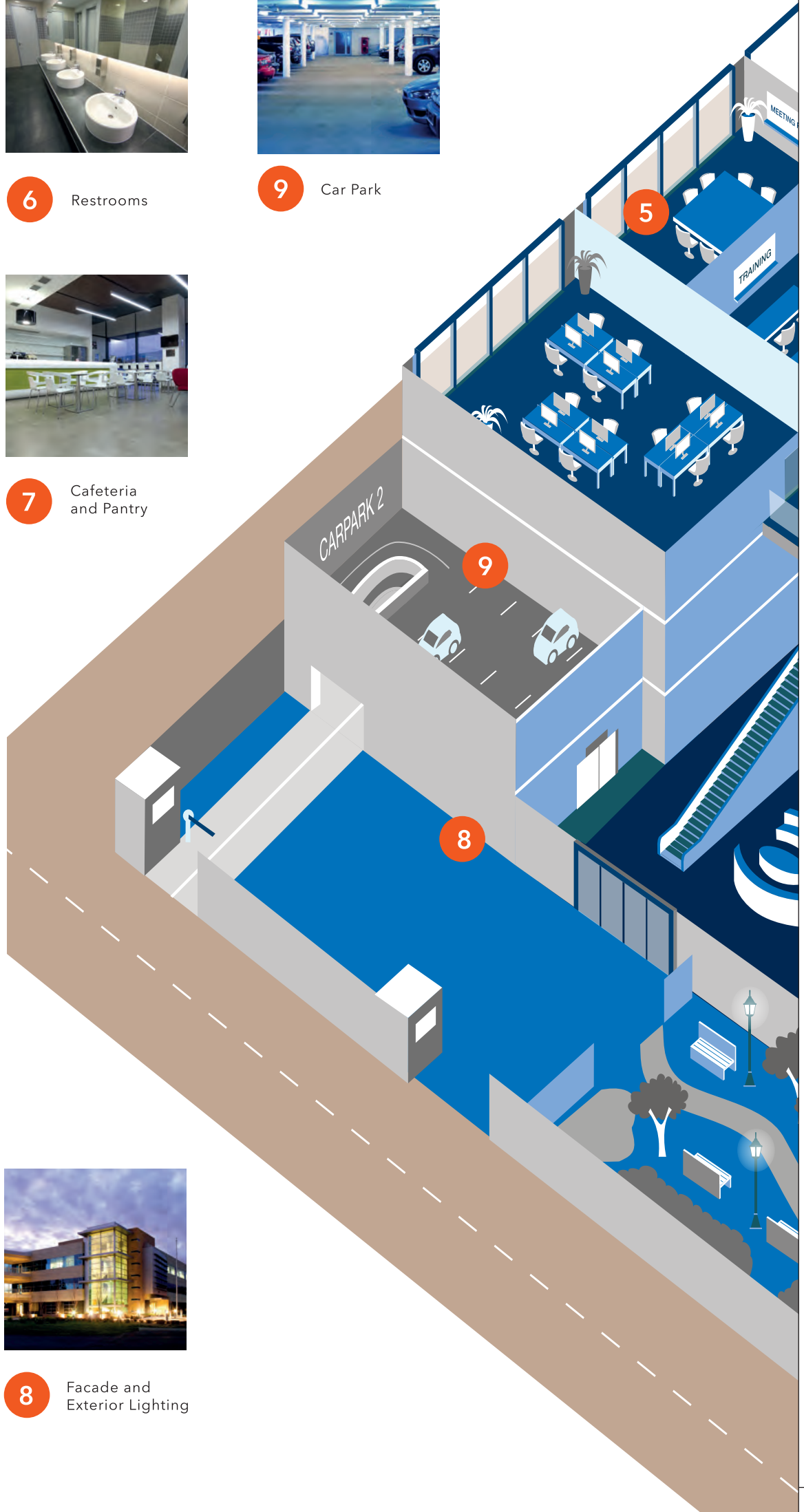
4 Cubicles



5 Meeting Room and Training Room



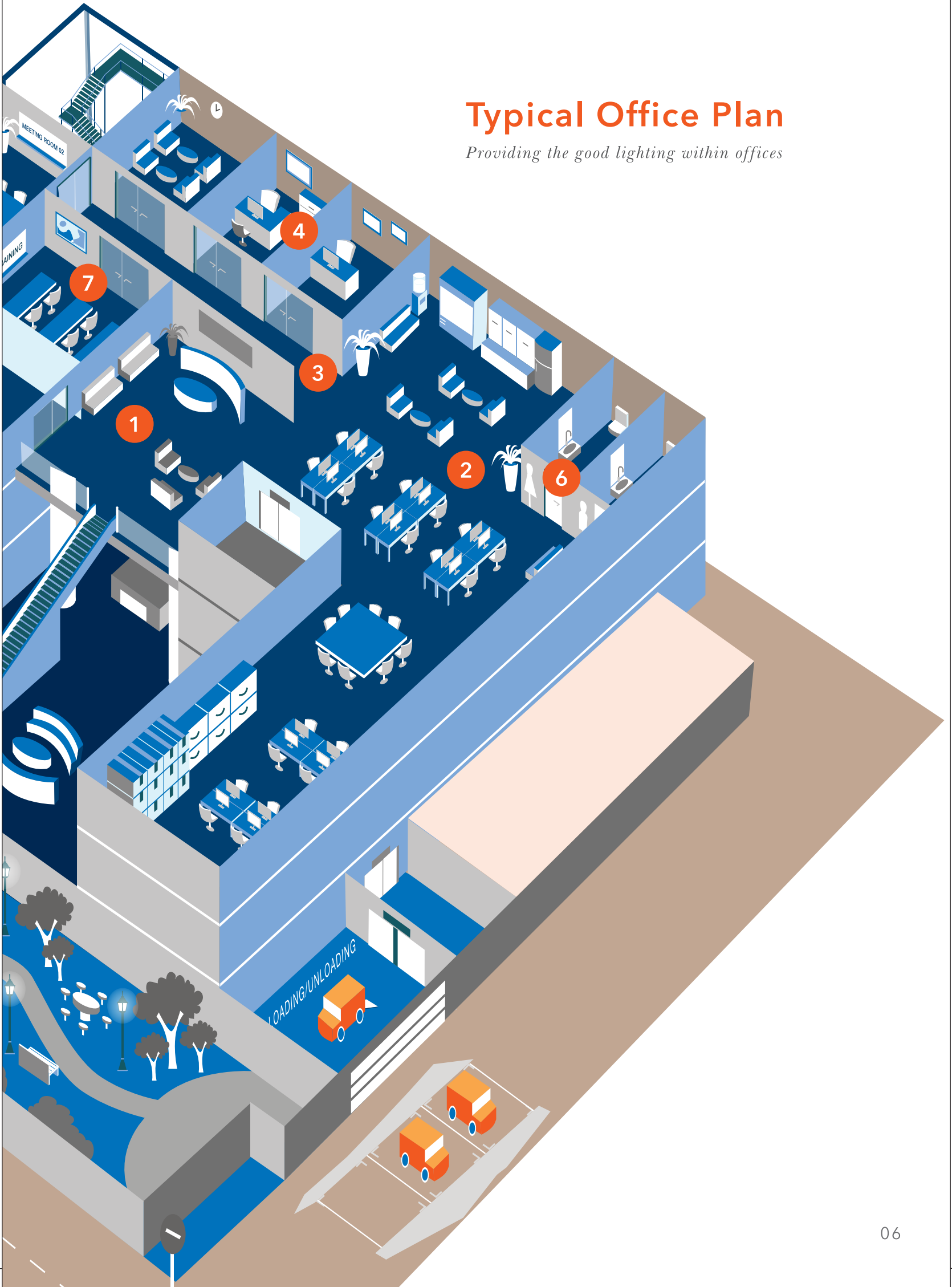
8 Facade and Exterior Lighting





# Typical Office Plan

*Providing the good lighting within offices*



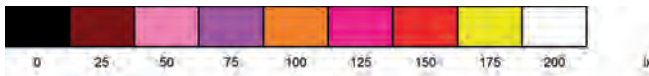
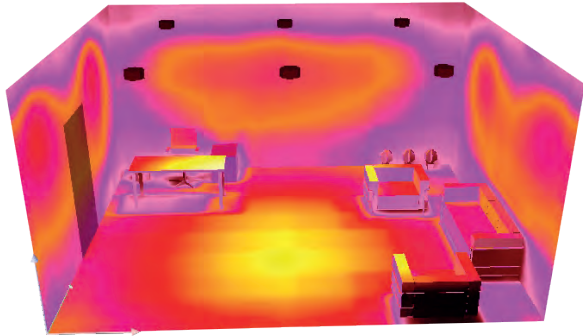


## Reception and Indoor Public Area

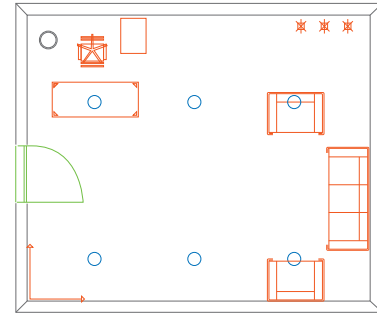
Make the right first impression

First impressions matters. Because your office reception is the first place your visitors see, it should always set the right tone and atmosphere to welcome your guests. Whether it's an elegant and warm lobby, or a dynamic and inspiring entrance, lighting is key in creating an ambience that lets you greet your visitors in flexible and attractive ways. From dramatic, vibrant schemes that reflect your company's brand identity and colours, to a soft ambience that helps soothe the senses, we have the right solutions to complement all office interior styles.

**Isolux diagram** showing the luminous distribution per room suggestion



**Plan view** detailing luminaire positioning and room layout



**Suggested product for this application**



**DRONE i** 20W, 32W

- Highly polished low glare downlight luminaire with aluminium heat sink for improved heat dissipation
- Efficacy >85 Lm/W, THD < 15%, CRI >80
- Available in Neutral White and White
- Driver mounted outside for easy maintenance

**DOVEE** 12W, 15W, 18W

- Pressure die cast LED downlight suitable for recess mounting
- Efficacy >75 Lm/W, THD <10%, CRI >80
- Available in Neutral White and White
- Integral driver for quick installation



**KLASS** 6W, 9W, 16W, 30W, 50W

- OB Based High Efficiency adjustable downlight
- Specially designed carriage assembly; 40° beam angle
- THD<15%,CRI>80, Available in CCT of White, Warm White and Neutral White
- These spotlights provide for varying needs be it general lighting, highlighting, wall washing from varying heights







## DRONE <sup>i</sup>

for upgrade solution - Payback period

### DOWNLIGHTER LUMINAIRES PAYBACK CALCULATION

Sr. No.	Description	2X18 W CFL (BJDR)	Dovee 18W
1	Number of Luminaires	200	200
2	Type of Lamp	CFL	LED
3	Type of Ballast	Electronic Ballast	Electronic driver
4	Power Consumption per lamp including ballast loss (W)	40	18
5	Energy Saving per lamp point (W)	---	22
6	Total Lighting Load (kW)	8	3.6
7	Reduction in Total Lighting Load (kW)	---	4.4
8	Usage per Day (Hrs.)	12	12
9	Usage per Year (Days)	365	365
10	Cost per Unit (Rs./ kWh)	7.5	7.5
11	Savings due to reduction in Total Lighting Load (Rs.)		144540
12	Cost per Lamp (Rs.)	130	0
14	Average Economic Life per Lamp (Hrs.) *	1100	2200
15	Number of Lamps replaced per year	20	0
16	Cost of Lamp Replacement per year (Rs.)	2600	0
17	Cost of Maintenance (Assuming 10% failure @ 200 per point (Including Ballast)	4000	Nil
18	Savings due to reduction in Lamp Replacement Cost (Rs.)		2600
19	Savings due to reduction in Maintenance Cost (Rs.)		4000
20	Total Savings per year (Rs.) Total Extra Investment Required		151140
21	Cost of Luminaire	1100	2200
22	No. of Luminaires	200 220000	200 440000
23	Total Extra Investment (Rs.)		220000
24	Payback (Years)		1.5

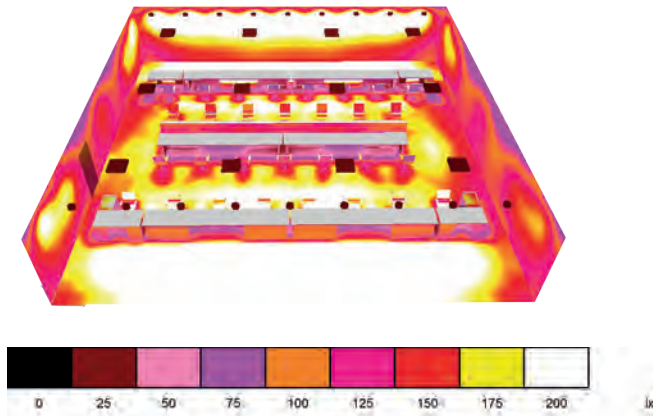


## Open Plan Office

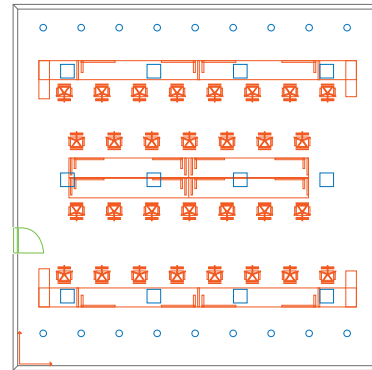
Open to bring ideas

Open plan offices are free-flow work areas designed with the flexibility to serve multiple needs. The lights here should be optimal to ensure work efficiency, without being too bright or too dim. Our lights are designed to help your teams see better, feel better and work better. Individual controls can be worked in to create an intelligent office where each person can adjust the lights to best suit his or her needs. Be it a task-focused office, or a creative studio, we have the right range of office luminaires, LED tubes and lamps to create a non-disruptive, well-balanced and conducive space benefiting your teams. Apart from quality lighting, advanced sensors can also be integrated to harvest daylight and to detect occupants, giving you a smarter office with up to 75% energy savings.

**Isolux diagram** showing the luminous distribution per room suggestion



**Plan view** detailing luminaire positioning and room layout



**Suggested product for this application**

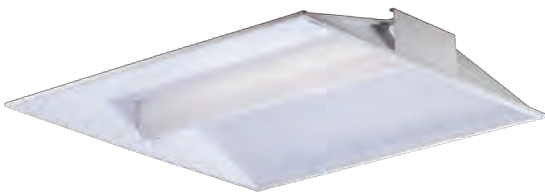


**SKYLUX 30W, 36W**

- Full acrylic LED luminaire suitable for 2x2 grid ceiling
- Efficacy >100 Lm/W, THD <10%, CRI >80, Available in CCT of NW, WH
- Driver mounted outside for easy maintenance, dimmable version available
- Your ready-made solution to upgrade from T5/CFL to LED in open office

**SKYLITE 36W, 43W**

- Emulate the natural Light for a soft, soothing & conforming atmosphere
- Unique extruded aluminum frame holding opal PMMA diffuser
- Efficacy >92 Lm/W, THD <10%, CRI >80, Available in CCT of NW, WH
- Recessed Luminaire suitable for mounting in grid ceiling ,POP & Gypsum



**GREENCENTER 36W**

- Recess mounting 2x2, soft direct light, with effect of indirect illumination
- Efficacy >75 Lm/W, THD <10%, CRI >80, Available in CCT of NW, WH
- Serrated CRCA housing has LED light source placed at the center

**PIR SENSOR**

- PIR sensors switch lights On and Off when a person enters or exits their field of view
- Available in surface mounted and flush mounted versions
- Detection pattern Coverage of 7m and 2.8m maximum height of installation
- Sensors saving an average of 30-40% on energy costs







## SKYLITE

for upgrade solution - Payback period

### PLANAR LUMINAIRES PAYBACK CALCULATION

Sr. No.	Description	2X36 W CFL	Skylux 36W
1	Number of Luminaires	100	100
2	Type of Lamp	CFL	LED
3	Type of Ballast	Electronic Ballast	Electronic Driver
4	Power Consumption per lamp including ballast loss (W)	80	36
5	Energy Saving per lamp point (W)	---	44
6	Total Lighting Load (kW)	8	3.6
7	Reduction in Total Lighting Load (kW)	---	4.4
8	Usage per Day (Hrs.)	12	12
9	Usage per Year (Days)	365	365
10	Cost per Unit (Rs./ kWh)	7.5	7.5
11	Savings due to reduction in Total Lighting Load (Rs.)		144540
12	Cost per Lamp (Rs.)	150	0
14	Average Economic Life per Lamp (Hrs.) *	10000	50000
15	Number of Lamps replaced per year	10	0
16	Cost of Lamp Replacement per year (Rs.)	1500	0
17	Cost of Maintenance (Assuming 10% failure @ 200 per point (Including Ballast)	2000	Nil
18	Savings due to reduction in Lamp Replacement Cost (Rs.)		1500
19	Savings due to reduction in Maintenance Cost (Rs.)		2000
20	Total Savings per year (Rs.) Total Extra Investment Required		148040
21	Cost of Luminaire	4450	5200
22	No. of Luminaires	100 445000	100 520000
23	Total Extra Investment (Rs.)		75000
24	Payback (Years)		0.5

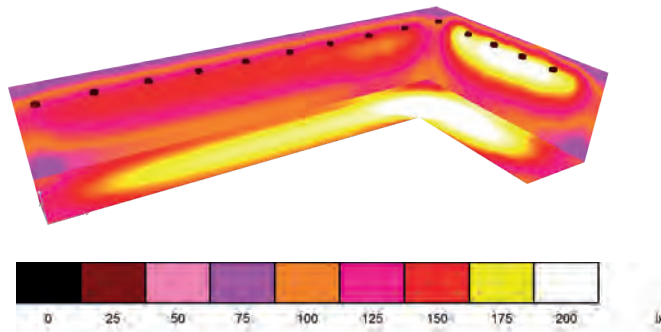


## Corridors and Circulation Area

Move around smoothly

Corridors and passageways are transit zones that lead you from one space to another. While your teams may not linger here for a long time, everyone appreciates bright and safely-lit corridors for functional reasons. They also serve as areas where art pieces and posters can be placed to display internal communications. To save on electricity bills, automated sensors can be worked in to turn the lights on and off intelligently. Alternating practical meeting rooms lit in cool daylight with relaxed corridors lit in warm white will also enable room users to rest their eyes and catch a breather as they prepare to leave a busy space and step into the next for a meeting.

**Isolux diagram** showing the luminous distribution per room suggestion



**Plan view** detailing luminaire positioning and room layout



**Suggested product for this application**



**DOVEE LH** 6W, 12W, 15W, 18W, 24W

- Pressure die cast LED downlight suitable for recess mounting with separate driver
- Efficacy >75 Lm/W, THD <10%, CRI >80
- Designed for low height ceiling depth
- Available in Neutral White and White

**KLASS** 30W, 50W

- COB Based High Efficiency adjustable downlight
- Specially designed carriage assembly; 40 beam angle
- Available in 6/9/16/30/50W COB
- These spotlights provide for varying needs be it general lighting, highlighting, wall washing from varying heights



**PIR SENSOR**

- PIR sensors switch lights On and Off when a person enters or exits their field of view
- Available in surface mounted and flush mounted versions
- Detection pattern Coverage of 7m and 2.8m maximum height of installation
- Sensors saving an average of 30-40% on energy costs

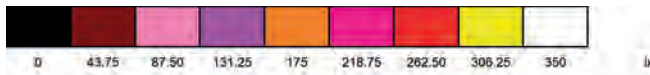
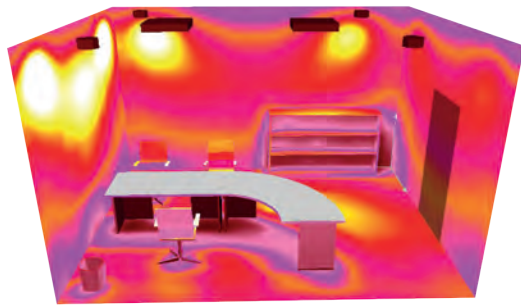


## Cubicles / Executive Offices

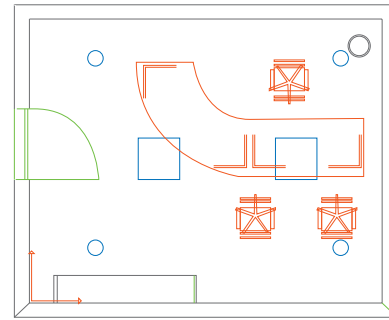
Quite and cozy den

Employees use cell offices and quiet booths when they need more privacy to conduct meetings, have a conference call or simply to focus better on their projects. Even small spaces can enjoy optimal light levels with the right products worked into the ceilings. With no glare, and no flicker, our luminaires can deliver light that is clear and yet easy on the eyes. Built-in sensors can ensure the lights go on and off automatically to help conserve energy, while dimming functions are useful in presentation sessions when projectors are on.

**Isolux diagram** showing the luminous distribution per room suggestion



**Plan view** detailing luminaire positioning and room layout



**Suggested product for this application**

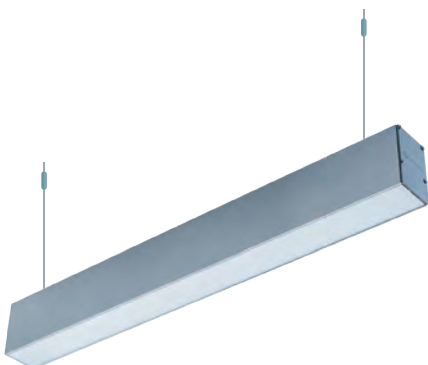
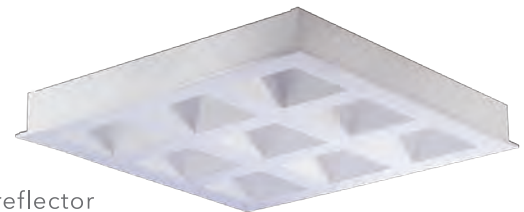


**AURALITE 36W, 43W**

- Wing design drop acrylic LED luminaire suitable for 2x2 grid ceiling
- Efficacy >90 Lm/W, THD <10%, CRI >80, CCT of White, Neutral White and Warm White

**WAFFLE 36W**

- Decorative and modular 2x2 with low glare rating
- LED luminaire with mono cell honeycomb reflective polycarbonate reflector
- Efficacy >85 Lm/W, THD <15%, CRI >80, Available in CCT of WW, WH and NW
- Highly efficient low glare optics



**CONNECT 40W**

- Full aluminium extruded luminaire suitable for connecting end to end
- High efficient LM80 certified LED chips used
- Efficacy >85 Lm/W, THD <15%, CRI >80, Available in Neutral White and White
- Driver mounted outside for easy maintenance

**PIR SENSOR**

Designed to detect motion from a heat-emitting source, PIR sensors switch lights On and Off when a person enters or exits their field of view  
 Available in surface mounted and flush mounted versions  
 Detection pattern Coverage of 7m and 2.8m maximum height of installation  
 Sensors saves an average of 30-40% on energy costs





**CONNECT**

for upgrade solution - Payback period

**LINEAR LUMINAIRES PAYBACK CALCULATION**

Sr. No.	Description	BSP 2X36 W	Connect 40W
1	Number of Luminaires	100	100
2	Type of Lamp	CFL	LED
3	Type of Ballast	Electronic Ballast	Electronic Driver
4	Power Consumption per lamp including ballast loss (W)	82	40
5	Energy Saving per lamp point (W)	---	42
6	Total Lighting Load (kW)	8.2	4
7	Reduction in Total Lighting Load (kW)	---	4.2
8	Usage per Day (Hrs.)	12	12
9	Usage per Year (Days)	365	365
10	Cost per Unit (Rs./ kWh)	7.5	7.5
11	Savings due to reduction in Total Lighting Load (Rs.)		137970
12	Cost per Lamp (Rs.)	250	0
14	Average Economic Life per Lamp (Hrs.) *	10000	50000
15	Number of Lamps replaced per year	10	0
16	Cost of Lamp Replacement per year (Rs.)	2500	0
17	Cost of Maintenance (Assuming 10% failure @ 200 per point(Including Ballast)	2000	Nil
18	Savings due to reduction in Lamp Replacement Cost (Rs.)		2500
19	Savings due to reduction in Maintenance Cost (Rs.)		2000
20	Total Savings per year (Rs.) Total Extra Investment Required		142470
21	Cost of Luminaire	2700	7700
22	No. of Luminaires	100 270000	100 770000
23	Total Extra Investment (Rs.)		500000
24	Payback (Years)		3.5



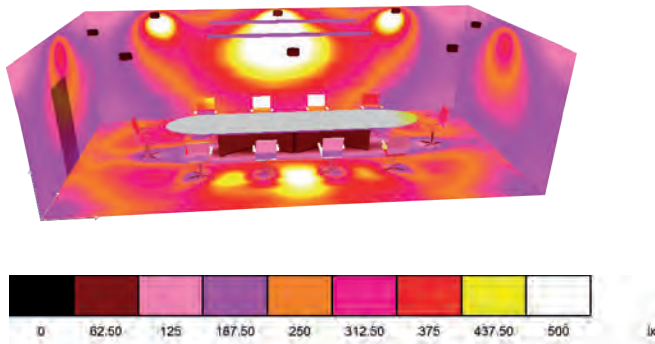
## Meeting/Conference/Training/Video Conference Rooms

Assembling for bright business opportunity

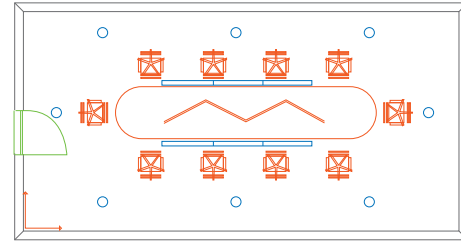
When it's time to get down to business, the right lighting is crucial to ensure we have the right focus and optimal productivity in the room. Whether it's for a short and straightforward meeting or a long brainstorming workshop, flexible controls should be there to allow light levels to be adjusted - to perk the team up or dimmed down when presentations are ongoing. Cove lighting can also be integrated to create softer hues to improve the overall ambience. You can even impress your guests by switching from one pre-set scene to another with just the touch of a button.



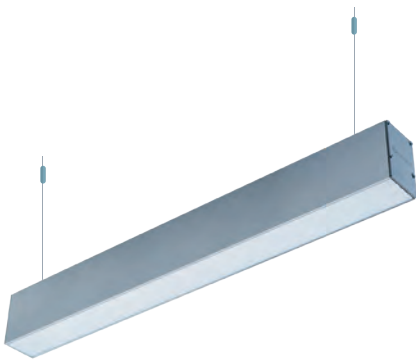
**Isolux diagram** showing the luminous distribution per room suggestion



**Plan view** detailing luminaire positioning and room layout



**Suggested product for this application**



**UP-DOWN LIGHT 36W**

- Up-down linear lighting with 20% up & 80% downward light distribution
- Superior extruded imported high transmitting PMMA to achieve a high efficacy
- Uninterrupted linear appearance with sleek profile of 70mm height & 50mm width
- Available in options of 4' and 8' ft
- Provision for loop in loop out for ease of wiring

**KLASS 30W, 50W**

- COB Based High Efficiency adjustable downlight
- Specially designed carriage assembly; 40° beam angle
- Available in 6/9/16/30/50W COB
- These spotlights provide for varying needs be it general lighting, highlighting, wall washing from varying heights



**PIR SENSOR**

- PIR sensors switch lights On and Off when a person enters or exits their field of view
- Available in surface mounted and flush mounted versions
- Detection pattern Coverage of 7m and 2.8m maximum height of installation
- Sensors saving an average of 30-40% on energy costs

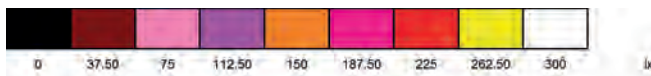
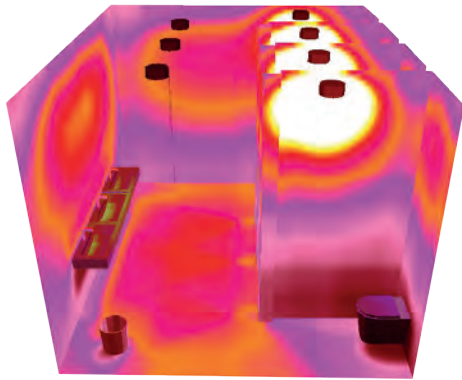


## Restrooms

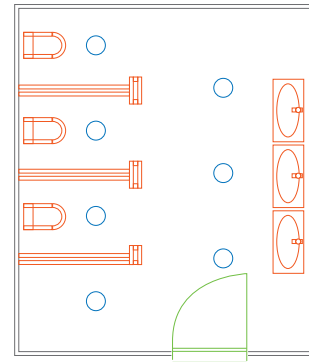
Ambient lighting to freshen up

Modern restrooms are designed not just for your employees but also for visitors and guests. Good lighting can make or break this space. When the lights are too harsh, the interiors can seem cold and unflattering. Apart from IP-rated functional lights, we can infuse elegant spots and a mix of warm white and cool daylight colour temperatures to create a more pleasant, relaxed space where users can comfortably refresh and recharge.

**Isolux diagram** showing the luminous distribution per room suggestion



**Plan view** detailing luminaire positioning and room layout



**Suggested product for this application**



**SLEEK** 3W, 6W, 8W, 12W, 15W, 18W

- Surface/recess mounted LED downlight for soft diffused lighting
- Height only 32mm, Efficacy >78 lm/w, CCT of WH, NW and WW, THD<15%
- Available in square and round shapes
- Used where there is Low False Ceiling Depths

**DOVEE LH** 6W, 12W, 15W, 18W, 24W

- Pressure die cast LED downlight suitable for recess mounting with separate driver
- Efficacy >75 Lm/W, THD <10%, CRI >80
- Designed for low height ceiling depth
- Available in Neutral White and White



**ULTRASONIC SENSORS**

- Do not require a direct line of sight, they can "see" around corners and objects
- Highly sensitive to motion - even minor hand movement
- 16m detection pattern and 2.8m maximum height of installation
- Sensors saves an average of 30-40% on energy costs

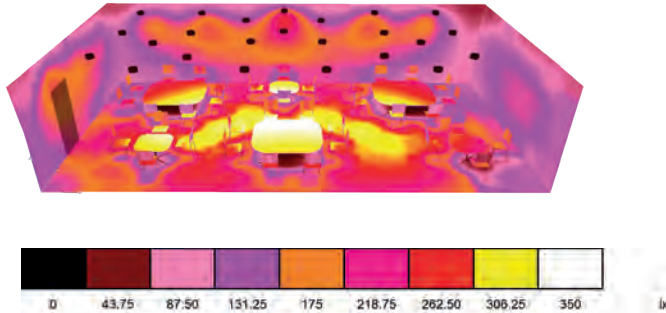


## Cafeteria

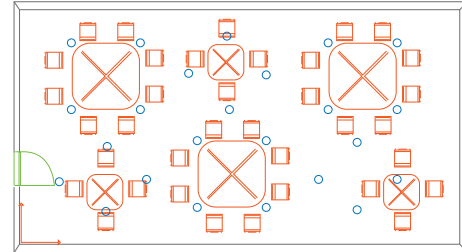
Lighting up your energy

In the same way that the kitchen is the heart of a home, your cafeteria or pantry deserves the best lighting because this is where your people take their much needed coffee breaks, socialize, have a quick meal and recharge. Island counters and breakfast bars can be beautifully lit with a combination of cove and spot lighting. Different colour temperatures can also add interest to feature walls, provide branding opportunities or simply create an inspiring perk-me-up corner.

**Isolux diagram** showing the luminous distribution per room suggestion



**Plan view** detailing luminaire positioning and room layout

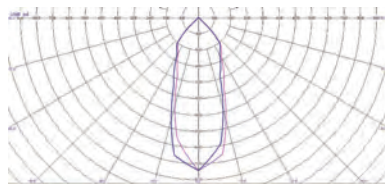


**Suggested product for this application**



**GALAXY 24W, 36W, 50W**

- Suspended Type Decorative LED Low bay Luminaire
- Available in 24W / 36W / 50W
- Surface mounting with suspension wire
- Decorative Integral die-cast aluminium housing comprises of anodized aluminium reflector
- COB LED mounted on extruded aluminium heat sink for better thermal management





## Exterior Façade & Lobbies

Talking entry point

Say hello and make a bold statement with office façade and exterior lighting that's impressive, impactful and representative of your brand. For out of reach areas or lobbies with very high ceiling, turn these characteristics into a feature wall by applying colored lighting creatively. Our wide selection of weatherproof architectural and landscape lighting can create theatrical accents for both the outdoors and connecting them indoors. Available in colored hues, warm white and cool daylight, our wallwashers and façade lighting are reliable, long-lasting and energy-efficient. Timers and programmable scene settings are also designed to ensure your office is always showcased in its full brilliance, from dusk to dawn.



**TURBO** 80W, 100W, 120W, 160W, 180W, 200W, 240W, 300W, 350W

- System efficacy > 90 lm/W
- Heat sink made up of aluminium extrusion
- Secondary optics for optimum light distribution
- Ingress Protection 66

**FORCE** 80W, 100W, 120W, 150W

- Replace existing conventional floodlight installations with lesser power consumption
- System Efficacy > 95 lm/W, IP66, Surge protection- 5 KV inbuilt and additional 10 KV external
- Secondary optics for optimum light distribution



**SIGNAGE**

- LED signage with in-built battery backup for 2 hours
- Available in single and double sided display
- Provide tailor made signages as per client requirements
- Different artwork is possible for different applications

**DAYLIGHT LUX LEVEL SENSORS**

- A key component of lighting control is maintaining a light level consistent with daylight
- As natural light enters a space, our .nxt™ Photo Sensors reduce artificial light levels, example when the sun goes down, or on a cloudy day, light levels increase
- 7m detection pattern and 2.8m maximum height of installation
- Sensors saves an average of 30-40% on energy costs



**PIR OCCUPANCY SENSORS**

- Designed to detect motion from a heat-emitting source, PIR sensors switch lights On and Off when a person enters or exits their field of view
- Available in surface mounted and flush mounted versions
- Detection pattern Coverage of 7m and 2.8m maximum height of installation
- Sensors saves an average of 30-40% on energy costs



## Car Park

Park in light

Create a safe and secure environment in your parking garage with sustainable, energy efficient LED lighting systems. Because they deliver the right amount of light when and where it's needed, our lighting systems save energy while keeping people safe. Uniform illumination reduces shadows and eliminates dark corners, so pedestrians feel safer and drivers enjoy good visibility. In addition to providing high-quality light, LEDs offer long useful life, which means you'll have to change lamps less often, reducing maintenance costs. Our team works with you to create tailored systems that meet the specific requirements of your unique parking structures.





### **BATON 18W**

- Integral sleek extruded polycarbonate LED channel with white acrylic cover
- Useful for cove lighting as well as general wall lighting
- Can be connected one to one in made to order situation
- High Efficacy of >80 lm/w, THD<20%, CRI>80, Available in White and Neutral White

### **BULKHEAD 10W**

- LED tube with built-in isolated electronic driver
- More than 320° Light window
- Perfect energy replacement of 36/40W FTL(T5/T8/T12)
- Leads to 50% energy saving, 80% maintenance & cost reduction, reduced CO<sub>2</sub> emission

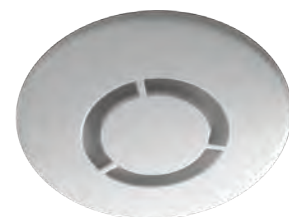


### **BATTEN MOUNTED SENSORS**

- High sensitivity PIR detector suitable for high bay applications
- Useful where high detection sensitivity is needed
- It is specifically designed for mounting onto a batten style luminaire
- Maximum Mounting Height is 20 m
- Detection pattern coverage of 40m
- Sensors saves an average of 30-40% on energy costs

### **MICROWAVE SENSORS / ULTRASONIC SENSORS**

- Ultrasonic sensors detect occupancy by emitting a high-frequency signal and interpreting changes in frequency as motion
- Do not require a direct line of sight, meaning they can "see" around corners and objects
- Highly sensitive to motion - even minor hand movement
- 16m detection pattern and 2.8m maximum height of installation
- Sensors saves an average of 30-40% on energy costs



# VOICE OF CUSTOMERS



Subject: Thank you Bajaj Team....

Dear Murali,

This small note is to thank you and entire Bajaj Lighting team for the support extended to Accenture in last two years of our association.

We appreciate your adherence to timelines – not a single consignment was delayed in last two years. This speaks a lot about the attention we get within Bajaj and the efforts you and your team make to meet our stringent timelines requirement. Would also wish to mention, we didn't face a single problem with your products in last two years and this proves the robustness of your products, and credibility of your design/R&D team.

Please do share our thanks with your other team members as well. We look forward to similar support in future too.

Regards,  
Bhavesh  
(Accenture Workplace Solutions – India Projects Delivery)



भारतीय रिज़र्व बैंक  
RESERVE BANK OF INDIA

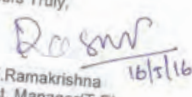
BAJAJ ELECTRICALS LTD.,  
Residency Road  
BANGALORE - 560 0025

Date: May 16, 2016

Dear Sir,

We have used BAJAJ brand LED Fixtures ( INDOOR & OUT DOOR TYPE) in our bank area. We are glad to inform that the performance of these light fittings are very good. The service & response time is appreciable.

Yours Truly,

  
S.T. Ramakrishna  
Asst. Manager(T-E),  
Estate Dept.,



भारतीय रिज़र्व बैंक, पुणे/का. वि. सं. १८/२०१६, पुणे/का. वि. सं. १८/२०१६, पुणे/का. वि. सं. १८/२०१६, पुणे/का. वि. सं. १८/२०१६  
Estate Department, No.18/2016, Narayana Road, P.O.No.5467, BANGALORE - 560 001  
Telephone No.2211 9684 : Fax No.800 - 2212 3280 : E-Mail ID : estatebangalore@rbic.org.in

**HDFC BANK**  
We understand your world  
Date : 19<sup>th</sup> February 2016

HDFC Bank Limited  
3A, Gurusaday Road,  
Kolkata 700019

To,  
Bajaj Electricals Ltd.  
8/1, Lalbasar Street,  
3<sup>rd</sup> Floor, Bikaner Building  
Kolkata : 70001

Subject: Appreciation Letter

It is to certify that we are satisfied with technical support along with service provided by M/s Bajaj Electricals Luminaries division for our various HDFC Bank Branches.

We hope this technical, commercial and service support will be provided by them in future.

Thanks and Regards  
  
Authorized Signatory

Regd. Office : HDFC Bank Limited, HDFC Bank House, Senapati Bazar Marg, Lower Flr

**COSMOS BANK**  
THE COSMOS CO-OP. BANK LTD. (Multi State Scheduled Bank)

To,  
**Bajaj Electricals Limited**  
601, Rustomjee Aspiree Building,  
Bhanu Shankar Yagnik Marg,  
Off Eastern Express Highway,  
Sion (East), Mumbai- 400 022.

You have provided the complete low voltage systems for us for approx. 2,74,000 Sq. feet area at Cosmos Tower in Pune.

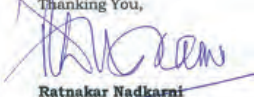
Your team has provided the Delta Controls make of Building management system and energy management system for a single window integration of all the services that have been provided in the premises. The system had an integration of the complete HVAC system like chillers, pumps, AHU, VFD and electrical systems like UPS, DG, and Energy meters.

You have also provided Milestone Video management software with Vivotek IP Cameras, i secure software for access control and time & attendance along with HID controller. Also two Ingersoll Rand Palm Readers, Novec 1230 Gas suppression system and hydrogen sensors are provided at our datacenter. You have installed Securiton fire detection and alarm system along with evacuation system of Bosch.

We appreciate the effort put in by Bajaj IBMS team and wish all the best to Bajaj IBMS team.

We look forward for a long-term business relationship with you.

Thanking You,

  
**Ratnakar Nadkarni**  
Chief General Manager  
Operations





# Retail





## Hypermarket and Supermarket

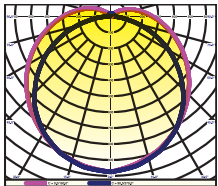
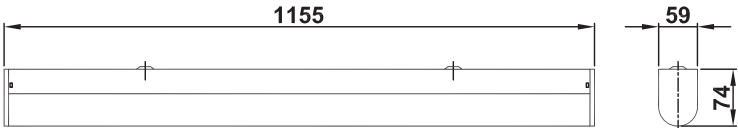
Supermarkets are the order of the day & they have peculiar lighting requirements – good vertical as well as horizontal lighting levels, which means providing light on every shelf & brand with distinct uniformity. While the products remain the same across different stores, you still need to make them stand out against your competition. Lighting plays a key role in projecting and supporting store image. It not only enhances the look and appeal of merchandise, but also affects the feeling of the space itself. The quantity and quality of illumination, the impression it creates about the merchandise and the effect it has on the retail area's appearance are all factors creating customer experience. The environment needs to make the patrons feel comfortable, leading to the ultimate objective – increase in sale. Let Bajaj's unique supermarket lighting solutions provide you with that distinct edge. Its exceptional and cost-effective solutions are designed to give you renditions that are sleek, smart and uniform.

Suggested product for this application



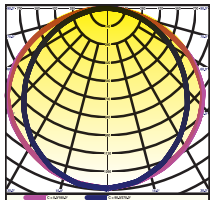
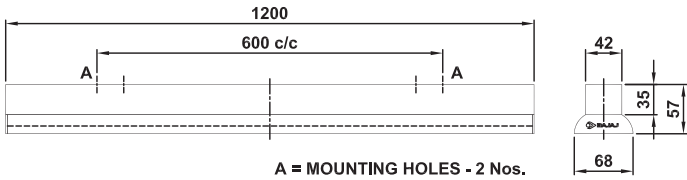
FLEXITRON VIVA I 40W

- Flexitron Viva I is a LED batten that is available in standalone & continuous versions
- Uniform light output, with spot free illumination and excellent vertical & horizontal illumination
- Good solution for replacing conventional 2x36w battens
- Opal poly carbonate diffuser is supported by a pair of engineering plastic end plates which facilitate easy removal for maintenance
- Driver: Constant current output driver, operating range 150 275V AC supply voltages
- The Luminaire is suitable for wall or ceiling mounting
- Also available in trunk mountable version for creating LED trunking system



FLEXITRON NEO 20W, 40W

- Neo is the slimmest, most powerful 40w led batten perfect to enhance look & appeal of your retail merchandise
- Neo can be interconnected to provide continuous trunking systems
- The interconnecting joints are customized to suit customers requirement & create wonderful continuous lighting
- Has CRCA and extruded aluminum housing
- Available in 40w and 20w
- Anodised aluminium extruded luminaire
- In-built CRCA powder coated trunk
- Lumen output - 4400 lumens (40W)
- PF 0.99
- Suitable for surface and suspended mounting
- Only 68mm wide - 57mm high



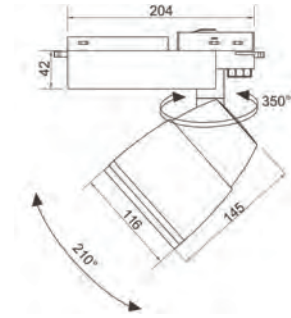


## Lifestyle

One can never underestimate the importance of lighting when it comes to Lifestyle brands. Placement, mood and other embellishments only add to the entire experience. Bajaj Lighting systems, with best-in-class lamp sources, high efficiency drivers and unique thermal management, provide remarkable results. Easy swivels & locking makes them highly adaptive and easy to use, helping you enhance the appeal of your brands. Presenting new age LED to 'Effectively' replace the CDM lamps. We say 'Effective' because it maintain same lux levels and also saves energy. For decades, ceramic discharge metal halide based Luminaires have ruled lifestyle domain. Not anymore!

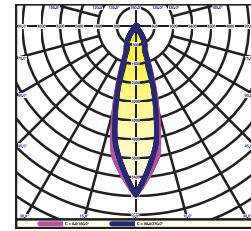


Suggested product for this application



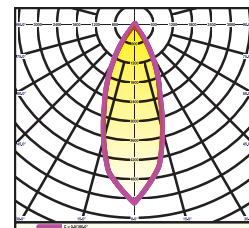
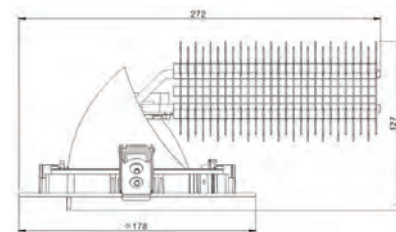
**DIRECTO** 28W, 36W, 50W

- Directo is a LED based track projector maintains same lux levels as conventional while reducing energy consumption & being eco friendly
- 3 phase track mounted
- Available in 28W, 36W & 50W
- Narrow & medium beam
- Die cast aluminium housing
- High purity aluminium finish reflector



**DOLLOPS** 28W, 36W, 50W

- Dollops is energy efficient led based spotlight for retail application
- Creates four corner lighting effect needed in retail spaces to highlight & enhance display
- Recessed mounted zoom type
- Reflector assembly swivels 450 from vertical & 1750 horizontal
- Available in 28W, 36W & 50W
- Narrow & medium beam

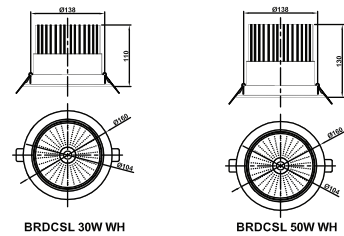
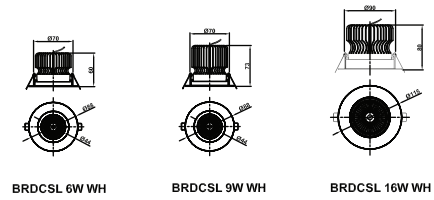




## Consumer Durables

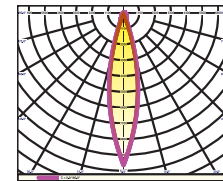
In the world of Consumer Durables and IT, people visualize how a certain product will look in their homes or as a part of their lives, and here's where the right lighting can make a difference. Bajaj's lighting solutions combine high performance and efficiency, offering both comfort and uniformity to give you amazing lighting at exceptionally low costs.

Suggested product for this application



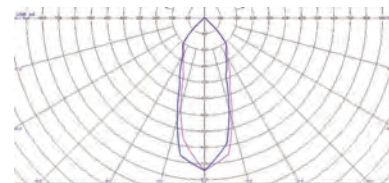
**KLASS** 6W, 9W, 16W, 30W, 50W

- COB Based High Efficiency adjustable downlight
- Complete pressure die cast housing
- Specially designed carriage assembly; 40 beam angle
- Available in 6/9/16/30/50W COB
- Matt finish/annodised aluminium reflector
- These spotlights provide for varying needs be it general lighting, highlighting, wall washing from varying heights



**GALAXY** 24W, 36W, 50W

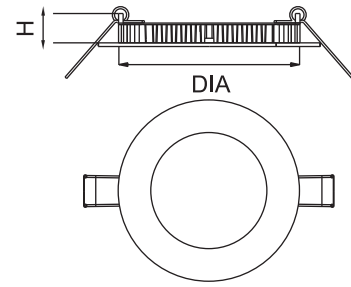
- Suspended Type Decorative LED Low bay Luminaire
- Available in 24W / 36W / 50W
- Surface mounting with suspension wire
- Decorative Integral die-cast aluminium housing comprises of anodized aluminium reflector
- COB LED mounted on extruded aluminium heat sink for better thermal management





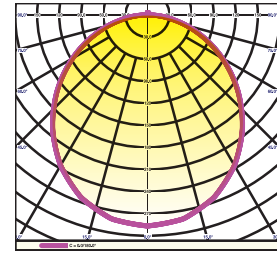
## Boutique/ Chain Stores

For a Boutique or concept stores, it is a must to have lighting design which attracts and engages the high-end shopper looking for luxury, elegance and expensive merchandise. Whether the function is to draw customers to a display or an exit sign, allow them to try on or examine merchandise or to make checkouts quick and easy, lighting must be suited to the task. This type of retail space requires a perfect combination of functional, aesthetic and mood lighting. Lighting Should Match the Style of the Boutique. At Bajaj we have perfect boutique lighting solutions which occupy less space & provide a soothing experience.



### SLEEK DOWNLIGHTER

- As the name suggests it's a Sleek fixture for soft down lighting.
- Construction is a die-cast aluminum frame and Polyester powder coated
- Available in both recessed and surface mounted versions in round and square shapes
- Recessed mounted die-casted sleek down lights for soft down lighting.
- Construction in die-cast aluminium frame.
- Fixture holding system using ss spring.
- Polyester powder coated.
- Constant current external LED driver is provided.
- 3W/6W/12W/15W/18W RD, 4W/8W/15W SQ



# APPRECIATION RECEIVED



Date: 31<sup>st</sup> March 2015

To,  
Bajaj Electricals Ltd.  
Luminaires Business Unit  
3rd Floor, Harchandrai House,  
Queens Road,  
Marine Lines,  
Mumbai -400002

## LETTER OF APPRECIATION

We, TATA Housing have been using Bajaj Luminaires regularly and have installed the same at our residential project "Inora Park" Undri Dist. Pune State-Maharashtra.

We are very much happy with the product quality, timely support and after sales service.

We appreciate the services offered by M/s Bajaj Electricals Ltd, since design and selection stage which has always been professional.

We would like to appreciate the efforts of Ms. Dimple Joshi, who provided us with the quick and effective response whenever we needed regarding any lighting related services.

We wish Bajaj Electrical all the very best for their future and hope for long term business relationship.

Thanking you.

Sushil Kadam  
(Sr. Manger-MEP)  
Tata Housing



## TATA HOUSING DEVELOPMENT COMPANY LIMITED

CIN - L19999MH1942PLC003573  
Trade World, E - Wing, 2<sup>nd</sup> Floor Kamala Mills Compound, Senapati Bapat Marg, Lower Parel (W), MUMBI  
Tel: 91 22 6607 0707 Fax: 91 22 6607 0708 E-mail: info@tatahousing.com  
Website: www.tatahousing.com



## Appreciation Letter

To,

Date:- 5th May 2014

Bajaj Electricals Limited  
601 (8th Floor), Rustomjee Aspire Building,  
Shankar Yagnik Marg,  
Off Eastern Express Highway,  
Sion (East), Mumbai-400 022.

SUB:-APPRECIATION FOR SUCCESSFUL INSTALLATION & COMPLETION OF BMS SYSTEM AT ORCHID HOTEL OLD BUILDING, against PO. NO. KHIL/ORCH/MUM/EXP/SER/05.

We appreciate the efforts of Bajaj Electricals Limited team for the successful installed, commissioned & completion of BMS SYSTEM within the specified time frame. We would like to Thank:

Mr. Walmik Nagare,  
Mr. Altaf Shaikh  
Mr. Jinesh Mota  
Mr. Anmol Chemburkar  
Mr. Manish Madhavi,  
Mr. Vijay Pawar,  
Mr. Shakti Leekha.

We also would like to appreciate the hard and dedications to Commissioning put forth by Mr. Walmik Nagare, Mr. Jinesh Mota, Mr. Altaf Shaikh and Mr. Manish Madhavi. Also Hearty thanks for their sincere contribution & convey.

We look forward for a long-term business relationship with M/s Bajaj Electricals Limited.

Thanking You,

  
  
DY C/E  
M/S KAMAT HOTELS (INDIA) LTD.

Nehru Road, Vile Parle (E), Mumbai - 400 060, India. Tel: 91-22-26164040, Fax: 91-22-26184141  
email: mres@orchidhotels.com Website: www.orchidhotels.com Room Reservations: 1800225437  
ECCOTEL<sup>®</sup> - The Emblem of Environmentally Sensitive Hotels  
A Class of Kamat Hotels (India) Ltd.

**DA Mart®**  
**Avenue Supermarts Limited**

CIN NO.- U51900MH2000PLC126473.  
41/1D, Ward No. 3, Indiranagar, Ramanthipuram, Uppal, Ranga Reddy, Hyderabad - 500 013.(A.P.)  
Tel.: 040 - 33457200 • Fax: 040 - 33457299

Date: July 17, 2016

To  
BAJAJ ELECTRICALS LTD.,  
Vital DAS Chambers  
HYDERABAD

Dear Sir,

We have used **BAJAJ** brand **LED LIGHT FITTINGS** for our retail store, We are glad to inform that the performance of this **LED** light fittings are very good & gives pleasant light output.

We are extremely happy with the product & after sales service support.

Your sincerely,  
  
Y Rangaswamy

**Chalet Hotels Private Limited**



**Appreciation Letter**

**SUB: - APPRECIATION FOR SUCCESSFUL INSTALLATION & COMPLETION.**

Bajaj IBMS has provided Car Callingsystems for JW Marriot-Andheri in Mumbai.

We appreciate the effort put by Bajaj IBMS team for Integration & Services.

We would like to hearty thanks for Altaf Shaikh, Manish Madhavi & his all the team members for their hard work & dedication.

We look forward for a long-term business relationship with M/s Bajaj Electricals Limited.

Thanking You,



M/S CHALET HOTELS PVT LTD

CIN - U50101MH1999PTC038038  
Regd. Off. - Raheja Tower,  
Plot No. C-30, Block 'G',  
Next to Bank of Baroda,  
Dandara Kurli Complex,  
Bandra (E), Mumbai-400 051  
Phone - 91-22-2656 4000  
Fax - 91-22-2656 5451  
Website - www.krahejacorp.com

## BRANCH OFFICES

### NORTH REGION

Chandigarh Tel.: 0172-5234600  
Delhi (Gulmohar): Tel.: 011-26549100  
Jaipur Tel.: 0141-2377364, 2369541, 2369542  
Lucknow Tel.: 0522-4938900-30  
Noida Tel.: 0120-4040400.

### EAST REGION

Bhubaneswar Tel.: 0674-2390697, 2396980, 2394052  
Guwahati Tel.: 0361-2346497, 2346498, 2346499  
Kolkata Tel.: 033-22622685  
Patna Tel.: 0612-2220155, 22231427

### CENTRAL REGION

Indore Tel.: 0731-2548909/10/18  
Raipur Tel.: 0771-2263976, 2263986, 4060166  
Nagpur Tel.: 0712-2440318, 2440319

### WEST REGION

Ahmedabad Tel.: 079-27543964, 27543967  
Mumbai Tel.: 022-22193000  
Pune Tel.: 020-26302000

### SOUTH REGION

Bengaluru Tel.: 080-42662222  
Chennai Tel.: 044-30662200  
Cochin Tel.: 0484-2391119, 2392039  
Hyderabad Tel.: 040-23442932, 23442933  
Visakhapatnam Mob.: 8008709998



**Bajaj Electricals Ltd.**

*Inspiring Trust*

LUMINAIRES BUSINESS UNIT  
601, Rustomjee Aspiree, Bhanu Shankar Yagnik Marg,  
Off. Eastern Express Highway, Sion (East), Mumbai - 400 022.  
Tel.: +9122 2406 4400 | Email: [luminaires@bajajelectricals.com](mailto:luminaires@bajajelectricals.com)

[www.bajajelectricals.com](http://www.bajajelectricals.com)